

JOSEPH

Rodgers

& SONS LTD.

SHEFFIELD, ENGLAND.

TRADE MARK



*World famous
Cutlery*

Sole Agents for U.S.A.

ALFRED FIELD & CO., Inc.

Established 1836

93 Chambers Street

New York

INTRODUCTION

The story of the Sheffield Cutlery Trade is probably one of the most fascinating chapters in all the romance of industry. Right through the story the name of Joseph Rodgers and Sons, Limited, and their world famous star and cross * ✕ trade mark granted in 1682, plays an important part.

The star and cross mark is significant evidence of something more than mere craftsmanship in steel. It is eloquent of the great spirit that has survived through many changes in the history of industry.

The tacit acceptance of the name "Rodgers" and the quality for which it stands is standard throughout the world. Individual pride of work is still as strong today throughout the House of Rodgers.

Such workmanship as this demands and deserves the finest materials. Since 1887 Rodgers have been making their own steel as an assurance of fitting quality.

Among the first in the Sheffield Cutlery world, Rodgers have also been the foremost in every advance that the years have brought. Stainless steel opened a new era, and today Joseph Rodgers and Sons, Limited, are the only Cutlers in England who make their own steel.

The Sportsman's Knife on opposite page is a fitting introduction to the pages that follow. It symbolizes tradition, skill and resource reflected in the many patterns of carbon steel and stainless steel cutlery illustrated throughout this catalog. However, this catalog covers only such goods as are in popular demand by the trade of the States and does not in any way include the production for other world-wide markets of Rodgers.

GUARANTEE

"Star and Cross" Cutlery is guaranteed against defects in workmanship and materials, but not for abuse such as improper grinding or sharpening, failure to oil joints of pocket knives thus causing blades to protrude above handle when closed, etc.

All "Star and Cross" Cutlery claimed to be defective must be submitted to Alfred Field & Co., Inc., for inspection. We reserve the right to pass on the validity of all claims for replacement.

USEFUL INFORMATION

Stainless Steel

It is a popular belief that knives made of stainless steel never possess a keen cutting edge. When knives are badly ground there is a good reason for this belief, as it is impossible to sharpen effectively a blade which has been inadequately ground. On the other hand, a very keen edge can be easily obtained on a well-ground blade. A further contributory cause to this unfounded belief is due to the neglect, on the part of the user, to sharpen Stainless Steel Knives. Prior to the invention of Stainless Steel, when ordinary steel knives were in use, this latter kind of knife had to be cleaned on a knife board and in the process of cleaning the knives were unwittingly sharpened. We, therefore, recommend that Stainless Steel Knives be sharpened from time to time, preferably, by using a steel.

It is also popularly believed that "Stainless" Steel is stainless under all conditions and is impervious to all acids, but this is an erroneous belief, doubtless due to the loose application of the term "Stainless."

The term "Stainless" must be understood in the relative sense seeing that, technically, there is no known metal which cannot be caused to enter into chemical action and, therefore, to corrode by placing it in a suitable mordant under suitable conditions, the noble metals, gold, platinum, etc., being no exceptions.

Notwithstanding the foregoing reservations, Stainless Steel articles can be kept free from stains providing that they receive proper treatment. It is recommended that articles, such as Table Knives, etc., be washed immediately after use. Food acids, especially those found in hot lamb and pork, attack Stainless Steel and are liable to cause stains if the knives are not thoroughly washed after use.

Pocket Knives

The handles or scales are all genuine Stag, Mother of Pearl, Ivoride, Nickel Silver or Stainless Steel. Synthetic or imitation Stag or Pearl is not used on any patterns shown in this catalog.

Tips, Caps or Bolsters are exclusively of Nickel Silver unless otherwise specified as steel.

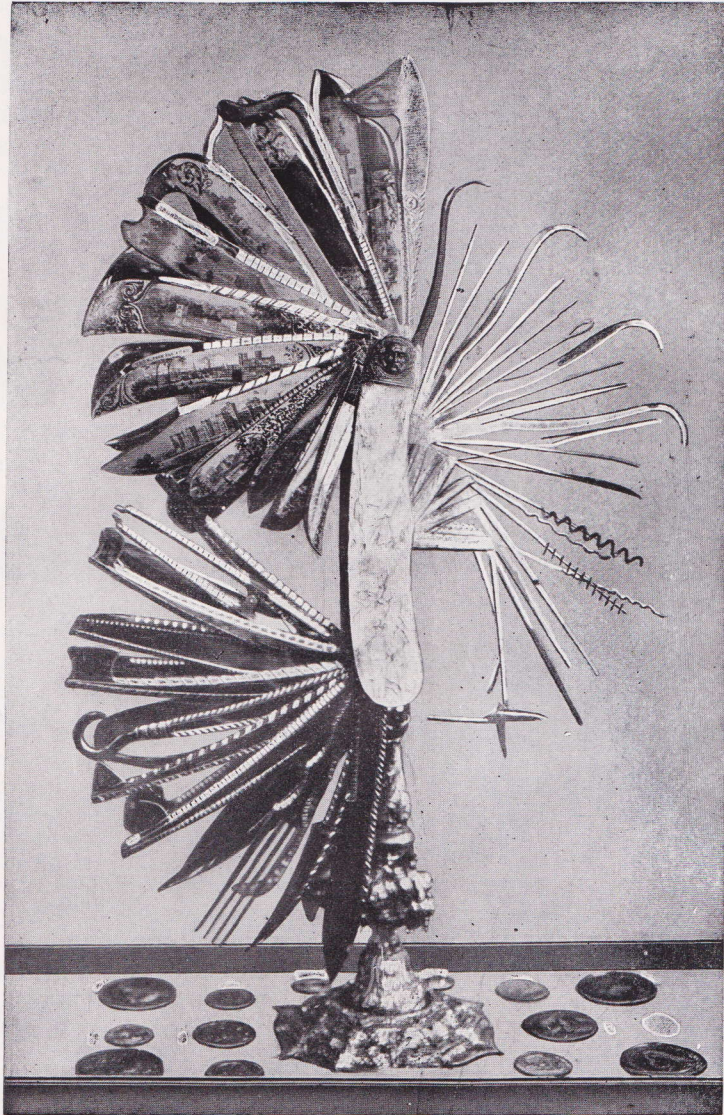
Abbreviation Symbols

P.	= Genuine Mother of Pearl	NS.	= No Shield
ST.	= Genuine Stag	B/L.	= Brass Lined
N/S.	= Nickel Silver	SKLD.	= Shackle or Bale
IVD.	= Grained Ivoride or Celluloid	S.F.	= Sheep Foot Design
SS.	= Stainless Steel		

ADVERTISING MATTER

All Dealers stocking Rodgers "Star and Cross" Cutlery will, upon request, be supplied with an appropriate assortment of window and show case display material. A compact and most attractive show case display and stock box with compartments for displaying Pen and Pocket Knives furnished to Dealers gratis, upon request.

THE NORFOLK SPORTSMAN'S KNIFE

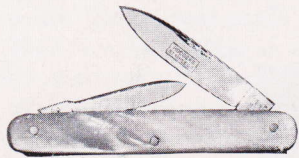


Here is shown the celebrated Norfolk Sportsman's Knife with its Seventy-five Blades. Most of these are etched or chased with hunting scenes, well-known buildings and persons, including Windsor Castle, Chatsworth House, Haddon Hall, The White House, and portraits of Queen Victoria, The Prince Consort, The Duke of Wellington and others. The scales are of Manila Pearl carved to depict a boar hunt and a stag hunt. It was made for the Exhibition of 1851 and took two years to manufacture.

RODGERS
STAINLESS

STAINLESS STEEL PEN AND POCKET KNIVES
TWO BLADE PATTERNS

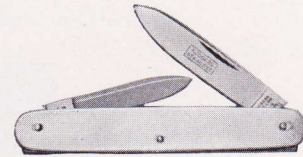
RODGERS
STAINLESS



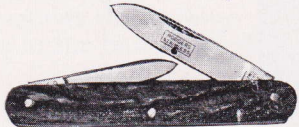
No. 62406 P.
3 inches, brass lined, glazed finish stainless steel blades, pearl handle.



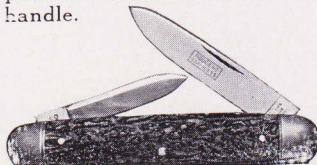
No. 24450 P.S.S.
3 1/4 inches, brass lined, mirror polished stainless steel blades, pearl handle.



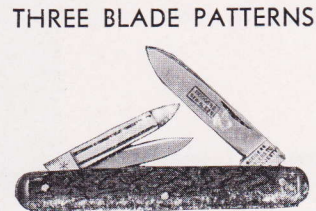
No. 62408.
3 inches, mirror polished stainless steel blades, nickel silver handles.



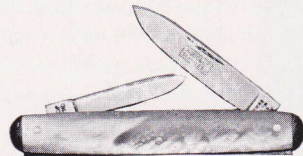
No. 62406 ST.
3 inches, brass lined, glazed finish stainless steel blades, stag handle.



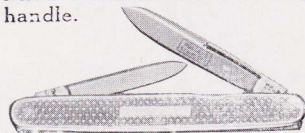
No. 24450 ST. SS.
3 1/4 inches, brass lined mirror polished stainless steel blades, stag handle.



No. 24784 ST. SS.
3 inches, brass lined, mirror polished stainless steel blades, stag handle. (Can also be supplied all cutting blades.)

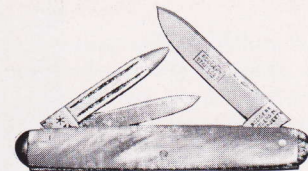


No. 24787 P.S.S.
3 inches, brass lined, mirror polished stainless steel blades, pearl handle.

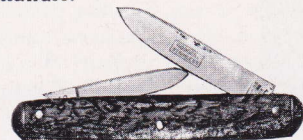


No. 62416.
3 inches, mirror polished stainless steel blades, engine turned stainless steel handle.

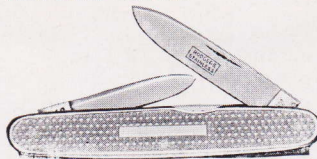
No. 24784 P.S.S.



No. 24784 P.S.S.
3 inches, brass lined, mirror polished stainless steel blades, pearl handle. (Can also be supplied all cutting blades.)



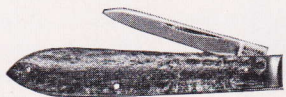
No. 24787 ST. SS.
3 inches, brass lined, mirror polished stainless steel blades, stag handle.



No. 9518.
3 1/4 inches, mirror polished stainless steel blades, engine turned stainless steel handle.

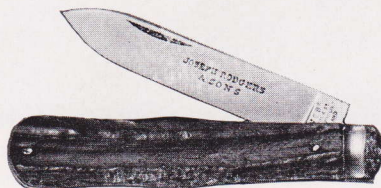
ONE BLADE POCKET KNIVES

PEN KNIFE



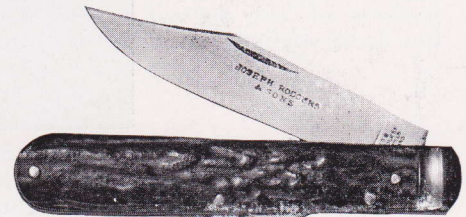
No. 11579 ST.
2 7/8 inches, steel lined, glazed finish blade, steel bolster, stag handle.

JACK KNIFE



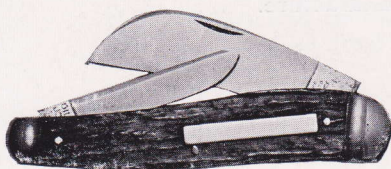
No. 19923 ST. — 1 BLADE.
3 3/4 inches, brass lined, full polished blade, steel bolster, stag handle.

LOCK BACK HUNTING KNIFE



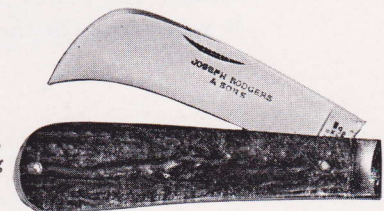
No. 12935 CLIP ST.
4 1/2 inches, brass lined, glazed finish blade, steel bolster, stag handle.

HORTICULTURAL KNIVES



No. 24755 ST.
3 7/8 inches, steel lined, full polished blades, steel bolsters, stag handle.

No. 29640 ST.
3 3/4 inches, steellined, glazed finish blades, steel bolster, stag handle.

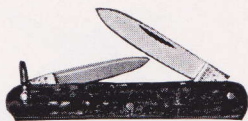


To sharpen Pen and Pocket Knives—hold the blade at an angle of 25° to 30° to a fine grain oil stone—never hold flat on stone. To preserve Pen and Pocket Knives—oil the joints occasionally—this prevents wear at the heel which causes blades to protrude.

CUTS 1/2 SIZE

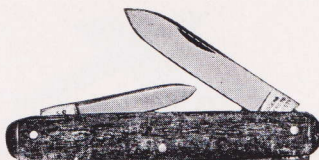
JOSEPH RODGERS & SONS, Ltd. * ✝ "STAR and CROSS" CUTLERY—SHEFFIELD, ENGLAND

TWO BLADE PEN AND POCKET KNIVES



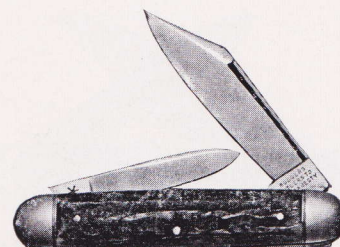
No. 25126 ST. SKLD.

2½ inches, brass lined, full polished blades, stag handle.



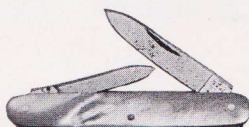
No. 24788 ST.

3¼ inches, brass lined, full polished blades, stag handle.



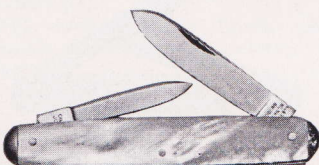
No. 25153 ST.

3⅜ inches, brass lined, full polished blades, stag handle.



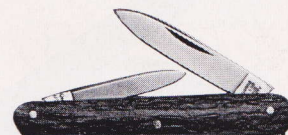
No. 25126 P.

2½ inches, brass lined, full polished blades, pearl handle.



No. 24788 P.

3¼ inches, brass lined, full polished blades, pearl handle.

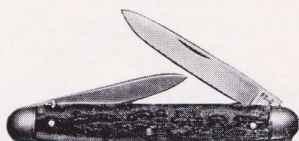


No. 24726 ST.

2⅞ inches, brass lined, full polished blades, stag handle. (Can also be supplied with nail blade.)

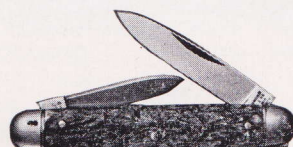
No. 25126 P. SKLD.

as above, but shackled.



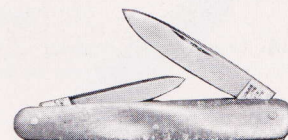
No. 24744 ST.

3 inches, brass lined, full polished blades, stag handle.



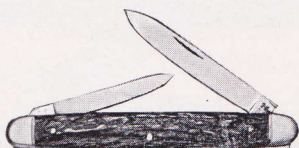
No. 24451 ST.

3 inches, brass lined, full polished blades, stag handle. (Can also be supplied with nail blade.)



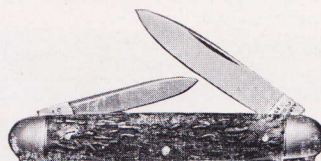
No. 24726 P.

2⅞ inches, brass lined, full polished blades, pearl handle. (Can also be supplied with nail blade.)



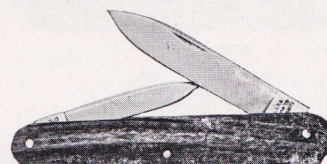
No. 25166 ST.

3 inches, brass lined, full polished blades, flat bolsters, stag handles.



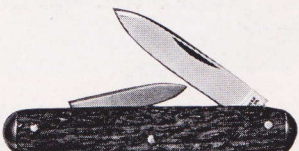
No. 24450 ST.

3¼ inches, brass lined, full polished blades, stag handle. (Can also be supplied with nail blade.)



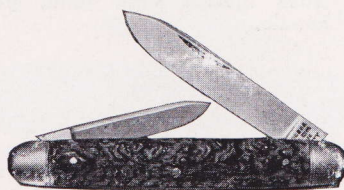
No. 21797 ST.

3¼ inches, brass lined, full polished blades, stag handle. (Can also be supplied with nail blade.)



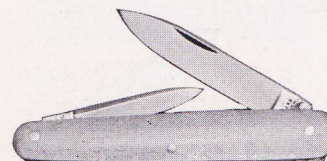
No. 24787 ST.

3 inches, brass lined, full polished blades, stag handle. (Can also be supplied with nail blade, also nail blade and shackle.)



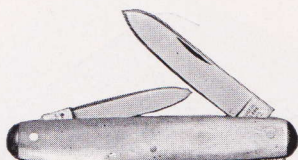
No. 24450 ST. — 3½

inches, brass lined, full polished blades, stag handle.



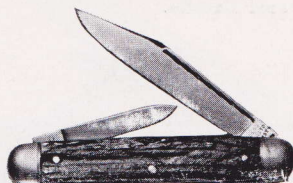
No. 21797 IVD.

3¼ inches, brass lined, full polished blades, white celluloid handle.



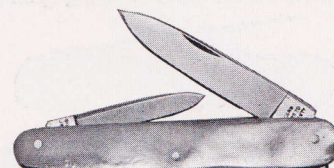
No. 24787 P.

3 inches, brass lined, full polished blades, pearl handle.



No. 25153 ST. — 3

inches, brass lined, full polished blades, stag handle.

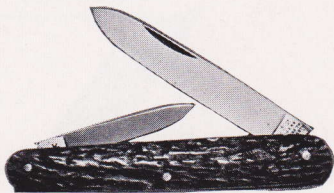


No. 21798 P.

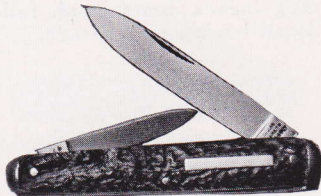
3¼ inches, brass lined, full polished blades, pearl handle. (Can also be supplied with nail blade.)

To sharpen Pen and Pocket Knives—hold the blade at an angle of 25° to 30° to a fine grain oil stone—never hold flat on stone. To preserve Pen and Pocket Knives—oil the joints occasionally—this prevents wear at the heel which causes blades to protrude.

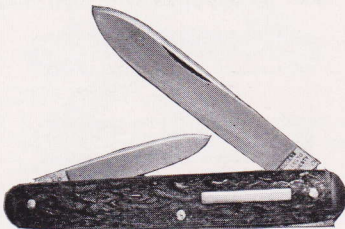
TWO BLADE PEN AND POCKET KNIVES



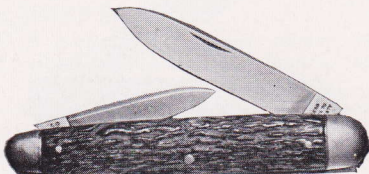
No. 26283 ST.
3 1/4 inches, brass lined, full polished blades, stag handle.



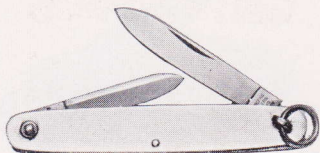
No. 26286 ST.
3 1/4 inches, brass lined, full polished blades, stag handle.



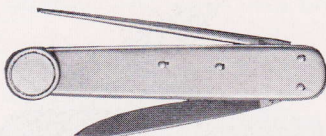
No. 26286 ST. — 3 1/2
inches, brass lined, full polished blades, stag handle.



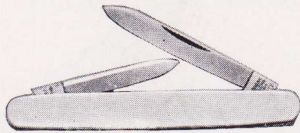
No. P950 ST.
3 3/4 inches, brass lined, full polished blades, stag handle.



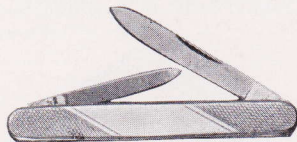
No. 24932 N/S.
3 1/8 inches, full polished blades, nickel silver handle. "Ring opener".



No. 6751 N/S.
3 1/4 inches, full polished blade, pipe cleaner and tobacco packing button. "Smokers Knife." Nickel silver handle.

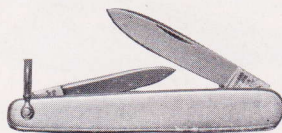


No. 24896 N/S.
3 inches, full polished blades, nickel silver handle.

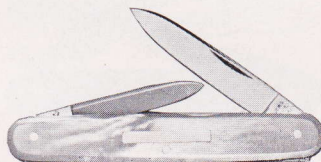


No. 9622 N/S.
3 inches, full polished blades, nickel silver front scale as illustrated, back scale striped.

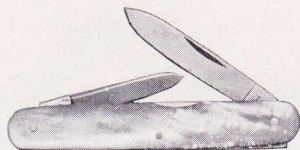
No. 9621 N/S.
3 inches, full polished, nickel silver front scale engine turned, back scale striped.



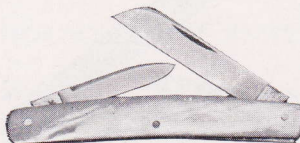
No. 24880 N/S. SKLD.
2 7/8 inches, full polished blades, nickel silver handles.



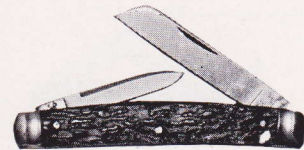
No. 24900 P.
3 1/4 inches, brass lined, full polished blades, sunk joint, pearl handle.



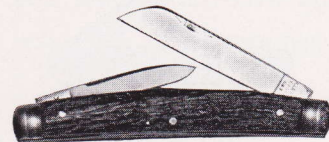
No. 24876 PNS.
3 inches, nickel silver lining milled, full polished blades, sunk joint, pearl handle.



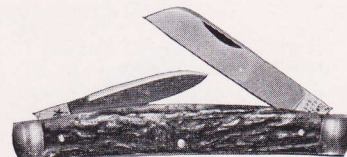
No. 24838 P.
3 inches, brass lined, large blade full polished, pearl handle.



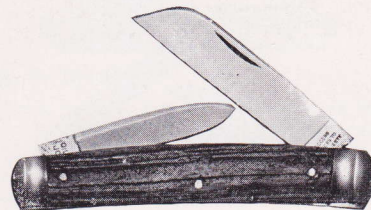
No. 22418 ST.
3 inches, brass lined, large blade, full polished, steel bolsters, stag handle.



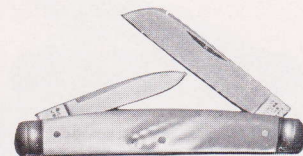
No. 22418 ST. — 3 1/4
inches, brass lined, large blade full polished, steel bolsters, stag handle.



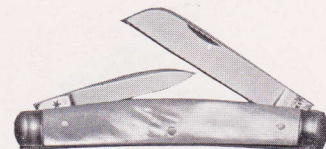
No. 22418 ST. — 3 1/2
inches, brass lined, large blade full polished, steel bolsters, stag handle.



No. 12091 ST.
3 3/4 inches, brass lined, large blade full polished, steel bolsters, stag handle.



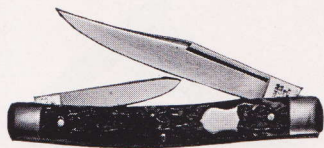
No. 22418 P.
3 inches, brass lined, full polished blades, steel bolsters, pearl handle.



No. 22418 P. — 3 1/4
inches, brass lined, full polished blades, steel bolsters, pearl handle.

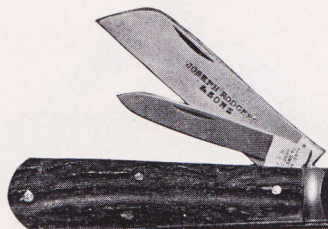
To sharpen Pen and Pocket Knives—hold the blade at an angle of 25° to 30° to a fine grain oil stone—never hold flat on stone. To preserve Pen and Pocket Knives—oil the joints occasionally—this prevents wear at the heel which causes blades to protrude.

TWO BLADE POCKET AND JACK KNIVES



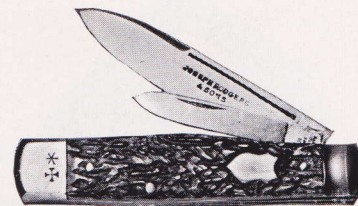
No. 66561 — 2 BLD. ST.

3¼ inches, brass lined, glazed finish blades, stag handle.



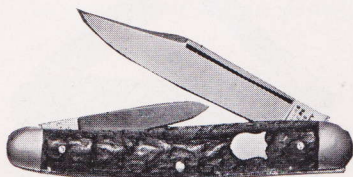
No. 12862 ST.

3¼ inches, brass lined, glazed finish blades, steel bolster, stag handle.



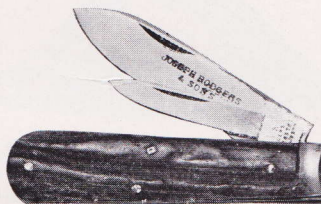
No. 29773 ST.

3½ inches, steel lined, glazed finish blade, steel bolster, nickel silver cap, stag handle.



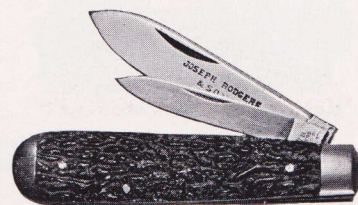
No. 66562 — 2 BLD. ST.

3½ inches, brass lined, large blade full polished, stag handle.



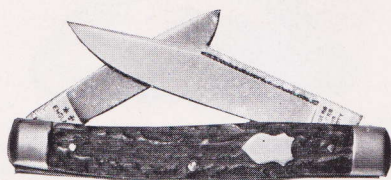
No. 12864 ST.

3¼ inches, brass lined, glazed finish blades, steel bolster, stag handle.



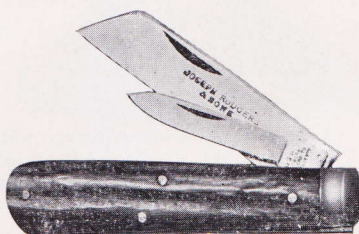
No. 29663 ST.

3½ inches, brass lined, full polished blades, stag handle.



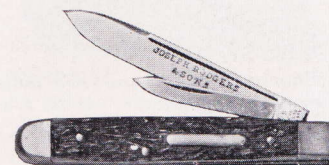
No. 66532 ST.

3⅞ inches, brass lined, large blade full polished, stag handle.



No. 24479 S.F. ST.

3⅝ inches, brass lined, glazed finish blades, steel bolster, stag handle.



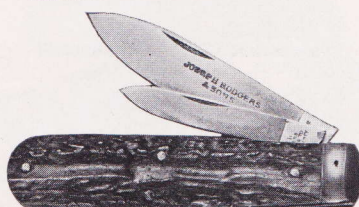
No. 29760 ST.

3¼ inches, brass lined, full polished blades, stag handle.



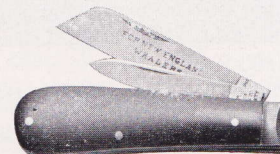
No. 24740 IVD. — 3¼

inches, brass lined, full polished blades, white celluloid handle.



No. 24479 SPR. ST.

3⅝ inches, brass lined, glazed finish blades, steel bolster, stag handle.



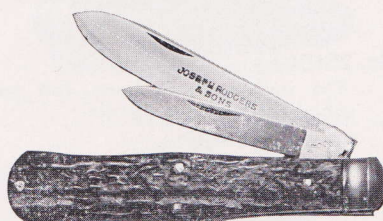
No. 12820 HORN.

2¾ inches, steel lined, glazed finish blades, steel bolster, horn handle. Large blade stamped "for New England Whalers."



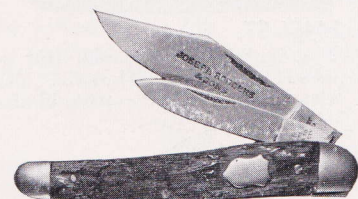
No. 24740 IVD.

3½ inches, brass lined, full polished blades, white celluloid handle.



No. 19923 ST. 2 BLADE.

3¾ inches, brass lined, full polished blades, steel bolster.

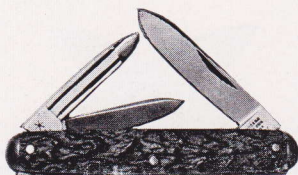


No. 32377 ST.

3½ inches, brass lined, front side blades full polished, stag handle.

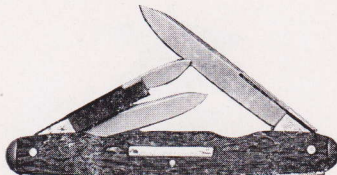
To sharpen Pen and Pocket Knives—hold the blade at an angle of 25° to 30° to a fine grain oil stone—never hold flat on stone. To preserve Pen and Pocket Knives—oil the joints occasionally—this prevents wear at the heel which causes blades to protrude.

THREE BLADE PEN AND POCKET KNIVES



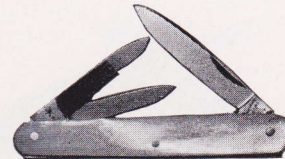
No. 24784 ST.

3 inches, brass lined, full polished blades, stag handle. (Can also be supplied all cutting blades.)



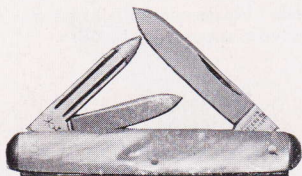
No. 21750 ST.

3 1/2 inches, brass lined, full polished blades, sunk joint, stag handle. (Can also be supplied all cutting blades.)



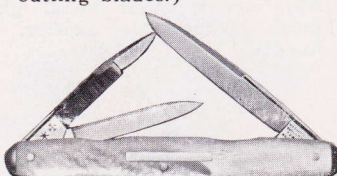
No. 24750 P.

2 7/8 inches, brass lined, full polished blades, pearl handle. (Can also be supplied all cutting blades.)



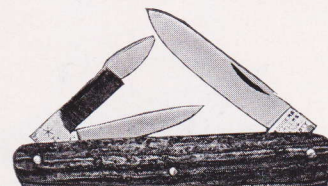
No. 24784 P.

3 inches, brass lined, full polished blades, pearl handle. (Can also be supplied all cutting blades.)



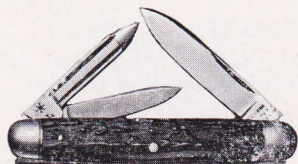
No. 21750 P.

3 1/2 inches, brass lined, full polished blades, sunk joint, pearl handle. (Can also be supplied all cutting blades.)



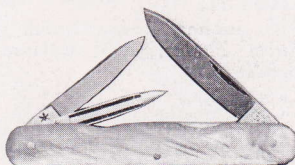
No. 21860 ST.

3 1/4 inches, brass lined, full polished blades, stag handle. (Can also be supplied all cutting blades.)



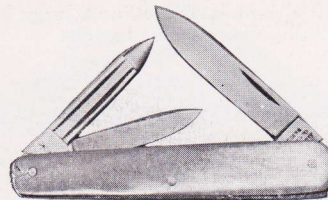
No. 24455 ST.

3 inches, brass lined, full polished blades, stag handle. (Can also be supplied all cutting blades.)



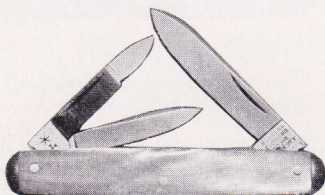
No. 24920 PNS.

3 inches, nickel silver lining milled, full polished blades, sunk joint, pearl handle. (Can also be supplied all cutting blades.)



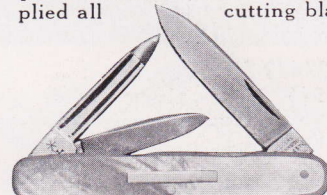
No. 21860 P.

3 1/4 inches, brass lined, full polished blades, pearl handle. (Can also be supplied all cutting blades.)



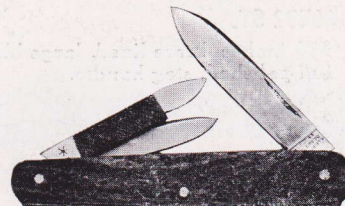
No. 24785 P.

3 1/4 inches, brass lined, full polished blades, pearl handle. (Can also be supplied all cutting blades.)



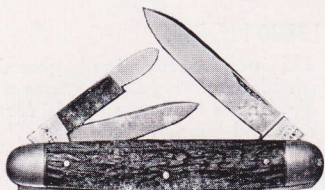
No. 24909 P.

3 1/4 inches, brass lined, full polished blades, sunk joint, pearl handle.



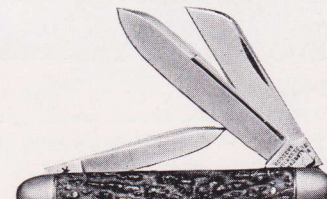
No. 21868 ST.

3 1/2 inches, brass lined, full polished blades, stag handle. (Can also be supplied all cutting blades.)



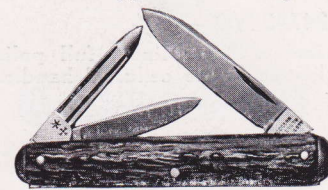
No. 24456 ST.

3 1/4 inches, brass lined, full polished blades, stag handle. (Can also be supplied all cutting blades.)



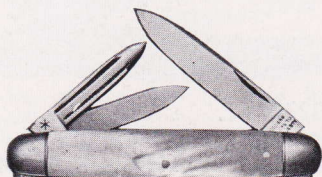
No. 25151 ST.

3 1/4 inches, brass lined, full polished blades, stag handle.



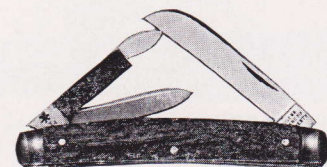
No. 24753 ST.

3 1/4 inches, brass lined, full polished blades, stag handle. (Can also be supplied all cutting blades.)



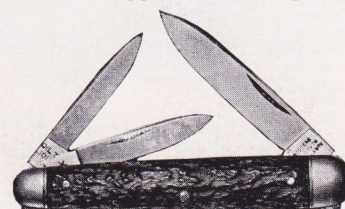
No. 24457 P.

3 1/4 inches, brass lined, full polished blades, pearl handle. (Can also be supplied all cutting blades.)



No. 12552 — 3 BLADE.

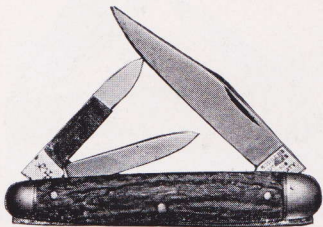
3 1/4 inches, brass lined, full polished blades, steel bolsters, stag handle. (Can also be supplied all cutting blades.)



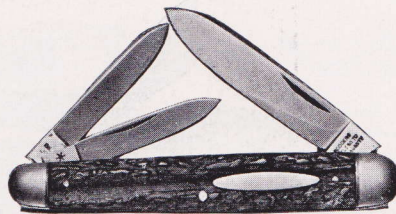
No. 22437 ST.

3 1/2 inches, brass lined, full polished blades, stag handle.

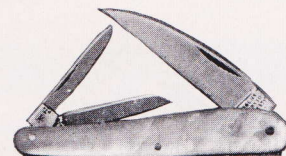
THREE BLADE PEN AND POCKET KNIVES



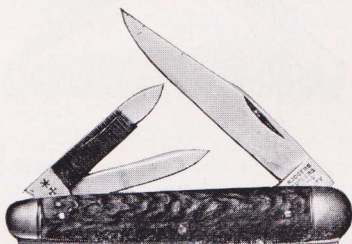
No. 26292 ST. NS.
3 1/4 inches, brass lined, full polished blades, stag handle. (Can also be supplied all cutting blades.)



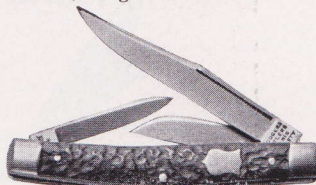
No. P960 ST.
4 inches, brass lined, full polished blades, stag handle.



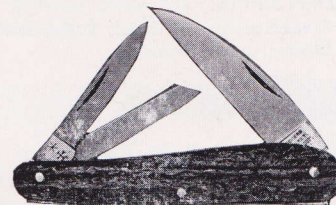
No. 24840 P.
2 7/8 inches, brass lined, full polished blades, pearl handle.



No. 26292 ST. NS. — 3 1/2 inches, brass lined, full polished blades, stag handle. (Can also be supplied all cutting blades.)

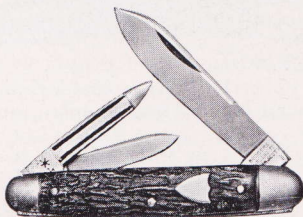


No. 66561 ST. — 3 BLD.
3 1/4 inches, brass lined, full polished blades, stag handle.

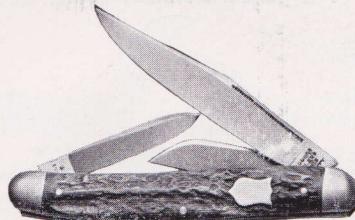


No. 16072 ST.
3 3/8 inches, brass lined, full polished blades, stag handle.

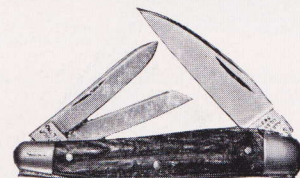
No. 16072 P.
3 3/8 inches, brass lined, full polished blades, pearl handle.



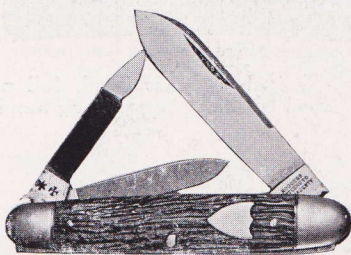
No. 24692 ST. — 3 inches, brass lined, full polished blades, stag handle. (Can also be supplied all cutting blades.)



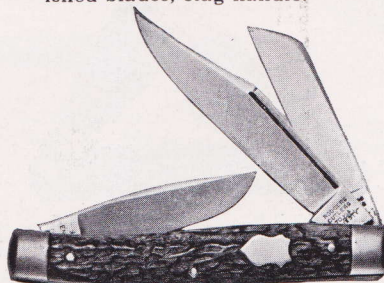
No. 66562 ST. — 3 BLD.
3 3/8 inches, brass lined, full polished blades, stag handle.



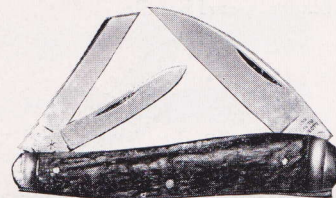
No. 25103 ST.
3 inches, brass lined, full polished blades, stag handle.



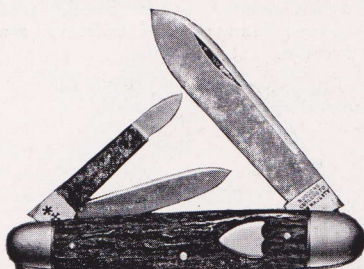
No. 24692 ST. — 3 1/2 inches, brass lined, full polished blades, stag handle. (Can also be supplied all cutting blades.)



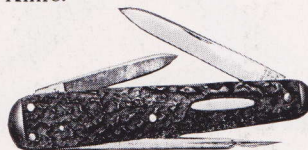
No. 66533 ST.
4 inches, brass lined, large blade full polished, stag handle. "Stock Knife."



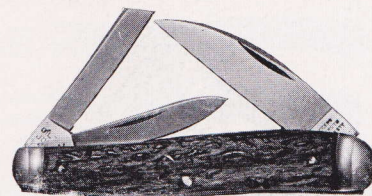
No. 11966 ST.
3 1/4 inches, brass lined, full polished blades, steel cap and bolster, stag handle.



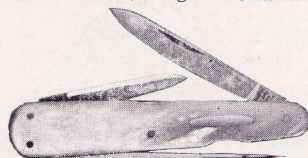
No. 24692 ST.
3 3/4 inches, brass lined, full polished blades, stag handle. (Can also be supplied all cutting blades.)



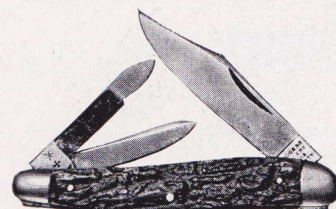
No. 25160 ST.
3 1/8 inches, brass lined, full polished blades, stag handle.



No. 11966 ST. — 3 3/4 inches, brass lined, full polished blades, steel cap and bolster, stag handle.

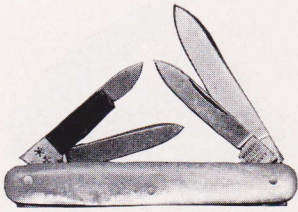


No. 24780 P.
3 1/8 inches, nickel silver lining, full polished blades, pearl handle.

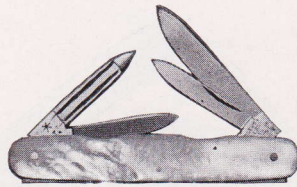


No. 25155 ST.
3 3/8 inches, brass lined, full polished blades, stag handle.

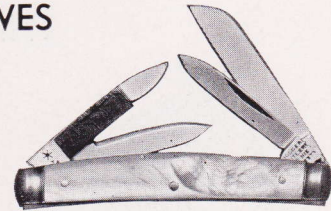
FOUR BLADE PEN AND POCKET KNIVES



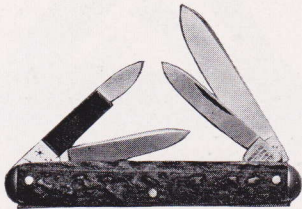
No. 24413 PNS.
3 inches, brass lined, full polished blades, pearl handle.



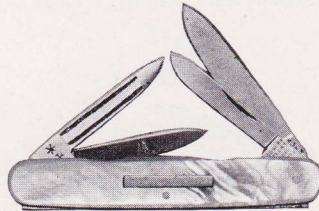
No. 24916 PNS.
3 inches, nickel silver lining milled, sunk joint, full polished blades, pearl handle.



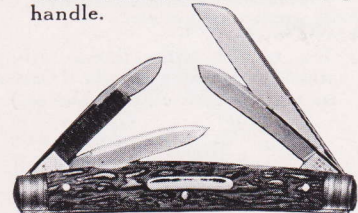
No. 12553 P.
3 1/4 inches, brass lined, full polished blades, steel bolsters, pearl handle.



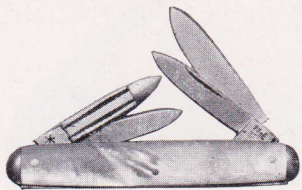
No. 24776 ST.
3 inches, brass lined, full polished blades, stag handle.



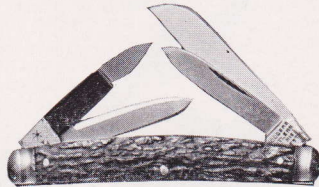
No. 24904 P.
3 1/4 inches, brass lined, sunk joint, full polished blades, pearl handle.



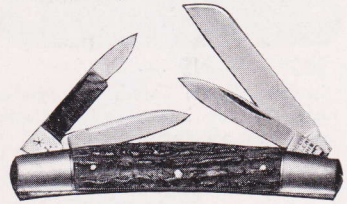
No. 24514 ST.
3 1/2 inches, brass lined, full polished blades, sunk joint, steel bolsters, stag handle. "The Pet".



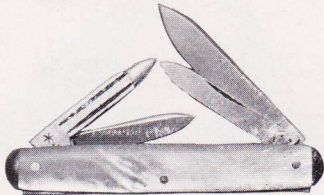
No. 24776 P.
3 inches, brass lined, full polished blades, pearl handle.



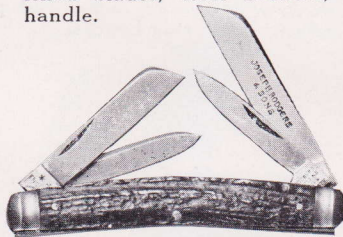
No. 12552 B/L. ST.
3 1/4 inches, brass lined, full polished blades, steel bolsters, stag handle.



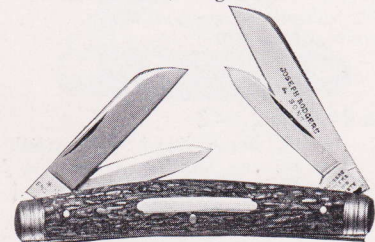
No. 22974 ST.
3 1/2 inches, brass lined, full polished blades, stag handle.



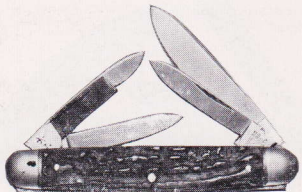
No. 24777 P.
3 1/4 inches, brass lined, full polished blades, pearl handle.



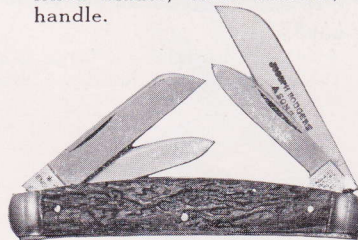
No. 12552 B/L. — 3 1/2 TOB. ST.
3 1/2 inches, brass lined, full polished blades, steel bolsters, stag handle.



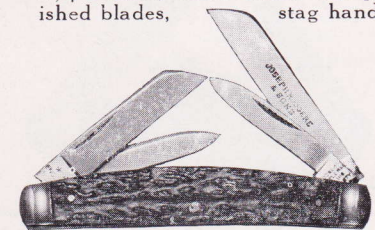
No. 24652 TOB. ST.
3 3/4 inches, brass lined, full polished blades, stag handle.



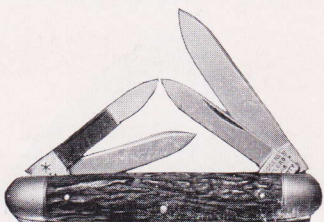
No. 22455 ST.
3 inches, brass lined, full polished blades, stag handle.



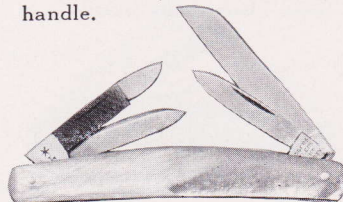
No. 12552 B/L. — 3 3/4 TOB. ST.
3 3/4 inches, brass lined, full polished blades, steel bolsters, stag handle.



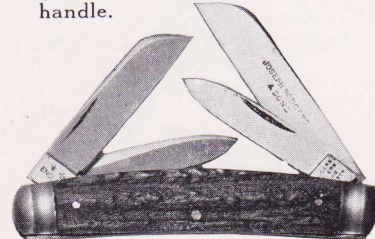
No. 24691 B/L. ST.
3 3/4 inches, brass lined, plain glazed blades, steel bolsters, stag handle.



No. 21701 ST.
3 1/4 inches, brass lined, full polished blades, stag handle.



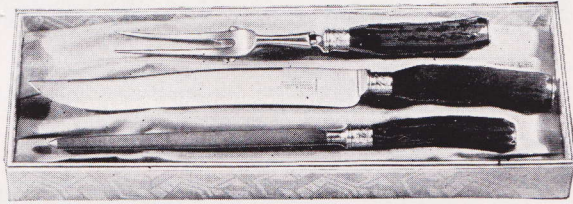
No. 24651 PNS.
3 1/2 inches, brass lined, full polished blades, pearl handle.



No. 24489 — 3 3/4 TOB. B/L.
3 3/4 inches, brass lined, full polished blades, steel bolsters, stag handle.

JOSEPH RODGERS & SONS, Ltd. * ✝ "STAR and CROSS" CUTLERY—SHEFFIELD, ENGLAND

STAINLESS STEEL CARVERS



Mirror Finish Stainless Steel Saracenic Blade Stainless Finish Fork Guarded. Genuine Dark Stag Handle. Sterling Silver Ferrules.

No. 3666—9 inch. 3 Piece Beef Set.
No. 3666—6 inch. 2 Piece Steak Pair.
No. 3666KK—3 Piece Set of Fork and Two Knives.



Mirror Finish Stainless Steel Slipper Blade Stainless Finish Fork Guarded. Genuine Natural Stag Handles, Beef Tine. Sterling Silver Ferrules.

No. 1676—9 inch. 3 Piece Beef Set.
No. 1676—6 inch. 2 Piece Steak Pair.



Mirror Finish Stainless Steel Slipper Blade Stainless Finish Fork Guarded. Genuine Natural Stag Handles. Sterling Silver Ferrules.

No. 1675—9 inch. 3 Piece Beef Set.
No. 1675—6 inch. 2 Piece Steak Pair.
No. 1675KK—3 Piece Set of Fork and Two Knives.



Mirror Finish Stainless Steel Eton Blade, Stainless Finish Fork Guarded. Selected Genuine Horn Handles, Flush Threaded Bolsters.

No. 94—9 inch. 3 Piece Beef Set.
No. 94—6 inch. 2 Piece Steak Pair.
No. 94KK—3 Piece Set of Fork and Two Knives.



Mirror Finish Stainless Steel Eton Blade, Stainless Finish Fork Guarded. Genuine Dark Stag Handles. Chromium Plated Ferrules.

No. 1830—8 inch. 3 Piece Beef Set.
No. 1830—8 inch. 2 Piece Beef Pair.
No. 1830—6 inch. 2 Piece Steak Pair.
No. 1830KK—3 Piece Set of Fork and Two Knives.



Mirror Finish Stainless Steel Slipper Blade Stainless Finish Fork Guarded. Genuine Dark Stag Handles. Chromium Plated Ferrules.

No. 1832—8 inch. 3 Piece Beef Set.
No. 1832—8 inch. 2 Piece Beef Pair.
No. 1832—6 inch. 2 Piece Steak Pair.
No. 1832KK—3 Piece Set of Fork and Two Knives.



Mirror Finish Stainless Steel Saracenic Blade Stainless Finish Fork Guarded. Genuine Dark Stag Handles. Chromium Plated Ferrules.

No. 1833—8 inch. 3 Piece Beef Set.
No. 1833—8 inch. 2 Piece Beef Pair.
No. 1833—6 inch. 2 Piece Steak Pair.
No. 1833KK—3 Piece Set of Fork and Two Knives.



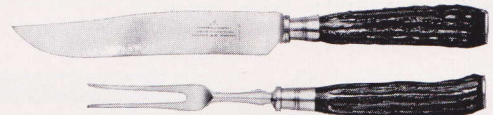
Mirror Finish Stainless Steel Slipper Blade Stainless Finish Fork Guarded. Genuine Dark Stag Handles. Forged Hollow Bolsters.

No. 1834—8 inch. 3 Piece Beef Set.
No. 1834—8 inch. 2 Piece Beef Pair.
No. 1834—6 inch. 2 Piece Steak Pair.
No. 1834KK—3 Piece Set of Fork and Two Knives.

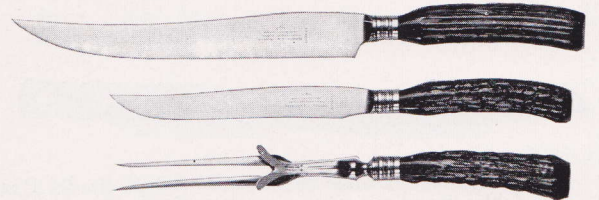


Mirror Finish Stainless Steel Slipper Blade Stainless Finish Fork Guarded. Genuine Horn Handles. Flush Threaded Bolsters.

No. 1835—8 inch. 3 Piece Beef Set.
No. 1835—8 inch. 2 Piece Beef Pair.
No. 1835—6 inch. 2 Piece Steak Pair.
No. 1835KK—3 Piece Set of Fork and Two Knives.



Two Piece Steak Pair. Consists of a Six-Inch Blade Knife and Fork Without Guard. Available in Nos. 3666, 1675, 94, 1830, 1832, 1833, 1834 and 1835.



KK Series Consists of a Beef Knife and Steak Knife With a Guarded Fork. Available in Nos. 3666, 1675, 94, 1830, 1832, 1833, 1834 and 1835.

CARBON STEEL CARVER



Glazed Finish Carbon Steel Slipper Blade, Glazed Finish Fork Guarded. Genuine Dark Stag Handles. Chromium Plated Ferrules.

No. 1850—8 inch. 3 Piece Beef Set.

All Carvers furnished in sateen lined gift display boxes as No. 3666 illustrated.
All guarded forks fitted with Patented Sanitary Removable Guard.

JOSEPH RODGERS & SONS, Ltd. * ✝ "STAR and CROSS" CUTLERY—SHEFFIELD, ENGLAND

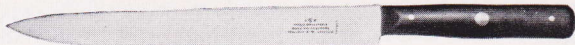
SLICERS — STAINLESS STEEL



No. 1888—9 inch
Mirror Finish Stainless Steel Blade. Rosewood Handle.
Nickel Silver Rivets. Scale Tang.



No. 2196—8 inch
Mirror Finish Stainless Steel Blade, Narrow and Flexible.
Blackwood Handle, Pinned. Scale Tang.



No. 2198—6 1/2 - 8 1/2 inches
Mirror Finish Stainless Steel Blade. Blackwood Handle,
2 Pins, 1 Nickel Silver Rivet. Scale Tang.



No. 2193—3 - 6 - 8 inches.
Mirror Finish Stainless Steel Blade. Forged Ferrule.
Blackwood Handle. Thru Tang.

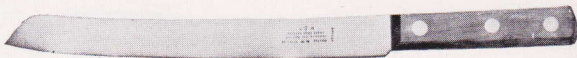


No. 2202—10 inch
Mirror Finish Stainless Steel Blade. Rosewood Handle.
Nickel Silver Rivets. Scale Tang.



No. 2201—9 inch
Mirror Finish Stainless Steel Blade. Rosewood Handle.
Nickel Silver Rivets. Scale Tang.

SERRATED EDGE STAINLESS STEEL SLICERS



No. 1890—8 inch
Mirror Finish Stainless Steel SAW EDGE Blade, Rose-
wood Handle, Nickel Silver Rivets, Scale Tang.

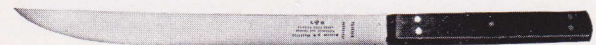


No. 2200—9 inch
Mirror Finish Stainless Steel SAW EDGE Blade, Black-
wood Handle, 2 Pins, 1 Nickel Silver Rivet, Half Tang.

SLICERS — CARBON STEEL



No. 1888 C.S.—9 inch
Glazed Finish Carbon Steel Blade, Rosewood Handle,
Nickel Silver Rivets, Scale Tang.



No. 2196 C.S.—8 inch
Glazed Finish Carbon Steel Blade, Narrow and Flexible.
Blackwood Handle, Pinned. Scale Tang.



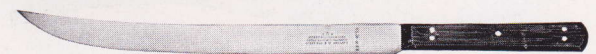
No. 2197 C.S. — 9-12 inches
Glazed Finish Carbon Steel Blade, Narrow and Flexible.
Blackwood Handle, Pinned, Scale Tang.



No. 2199—12 - 14 - 16 inches
Glazed Finish Shear (Carbon) Steel Blade. Blackwood
Handle, Pinned, Scale Tang. Composition Bolster.



No. 2205—10 inch
Glazed Finish Shear (Carbon) Steel Blade, Narrow and
Flexible. Rosewood Handle Finger Grip Fitted, Nickel
Silver Rivets, Scale Tang.



No. 2210 C.S.—10 inch
Glazed Finish Carbon Steel Blade, Blackwood Handle,
Pinned, Scale Tang.

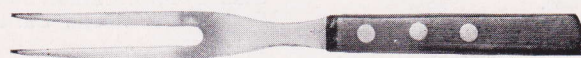


No. 2211 C.S.—10 inch
Glazed Finish Carbon Steel Blade, Blackwood Handle,
Pinned, Scale Tang.



No. 2191 C.S.—5 - 7 - 9 inches
Glazed Finish Carbon Steel Blade, Blackwood Handle,
Steel Bolster.

STAINLESS STEEL KITCHEN FORK



No. 1892
Mirror Finish Stainless Steel, Rosewood Handle, Nickel
Silver Rivets, Scale Tang—10 inch overall.

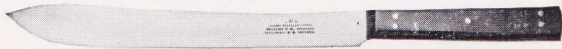
JOSEPH RODGERS & SONS, Ltd. * ✝ "STAR and CROSS" CUTLERY—SHEFFIELD, ENGLAND

BUTCHER KNIVES — STAINLESS STEEL



No. 1889—7 inch "Provision Knife"
Mirror Finish Stainless Steel Blade, Rosewood Handle,
Nickel Silver Rivets, Scale Tang.

BUTCHER KNIVES — CARBON STEEL



No. 2204 C.S. — 8 inch "Provision Knife"
Glazed Finish Carbon Steel Blade, Blackwood Handle,
Pinned, Scale Tang.

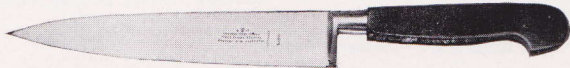


No. 2212 C.S.—"Steak Knife"—12 - 14 inches
Glazed Finish Carbon Steel Blade, Blackwood Handle,
Nickel Silver Rivets, Scale Tang.

COOKS KNIVES — STAINLESS STEEL



No. 1891—8 inch
Mirror Finish Stainless Steel Blade, Rosewood Handle,
Nickel Silver Rivets, Scale Tang.



No. 2192—7 inch
Mirror Finish Stainless Steel Blade, Forged Ferrule,
Blackwood Handle, Thru Tang.

COOKS KNIVES — CARBON STEEL



No. 85541 C.S.—9 - 10 - 11 - 12 inches
"For Cutting, Not Chopping". Carbon Steel Glazed
Finish Blade, Blackwood Handle, Pinned, Scale Tang.

No. 85541 EXH
Same as above but EXTRA HEAVY. Riveted, Scale
Tang.

GRAPE FRUIT KNIFE — STAINLESS STEEL



No. 1887
Mirror Finish Stainless Steel SAW EDGE Blade, Rose-
wood Handle, Nickel Silver Rivets, Scale Tang.

PARING KNIVES — STAINLESS STEEL



No. 1885—3 1/2 inch
Mirror Finish Stainless Steel Blade, Rosewood Handle,
Nickel Silver Rivets, Scale Tang.

No. 4404-WR—3 1/2 inch
Same as above but with White Rubber Handle, Pinned,
Scale Tang.



No. 1886—3 1/2 inch
Mirror Finish Stainless Steel Blade, Rosewood Handle,
Nickel Silver Rivets, Scale Tang.



No. 1894—4 inch "Utility Knife"
Mirror Finish Stainless Steel Blade, Rosewood Handle,
Nickel Silver Rivets, Scale Tang.



No. 2185—3 1/2 inch
Mirror Finish Stainless Steel Blade, Blackwood Handle
2 Pins, 1 Nickel Silver Rivet, Scale Tang.



No. 2186—2 1/2 inch
No. 2187—3 inch
Mirror Finish Stainless Steel Blade, Blackwood Handle,
2 Pins, 1 Nickel Silver Rivet, Half Tang.



No. 2188—3 inch
Mirror Finish Stainless Steel Blade, Blackwood Handle,
2 Pins, 1 Nickel Silver Rivet, Half Tang.

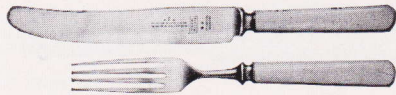


No. 2189—2 3/4 inch
Mirror Finish Stainless Steel Blade, Brownwood Handle,
Pinned, Half Tang.



No. 2190—3 1/2 inch
Mirror Finish Stainless Steel Blade, Brownwood Handle,
Pinned, Half Tang.

TABLE KNIVES AND FORKS



No. 821 IVD. TABLE—5½ inch Blade.

No. 821 IVD. DESSERT—4½ inch Blade.
Mirror Finish Stainless Steel Knives and Four Tine Forks. Grained Ivoride Handles. Forged Hollow Bolsters.

No. T170 PEARL TABLE—5½ inch Blade.

No. T170 PEARL DESSERT—4½ in Blade.
Mirror Finish Stainless Steel Knives and Four Tine Forks. Mother of Pearl Handles, Forged Hollow Bolsters.

CHEESE SERVERS

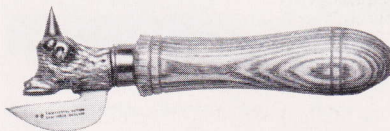


No. 904 KNIFE—4 inch Blade.
Mirror Finish Stainless Steel. Grained Ivoride Handle. Combination Knife and Two Tine Fork for one hand operation.

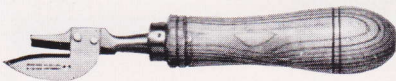


No. 165 SCOOP—5 inch Blade.
Mirror Finish Chromium Plate Forged Steel. Grained Ivoride Handle. The Bowl is 1 inch wide and 1½ inches long.

CAN OPENERS

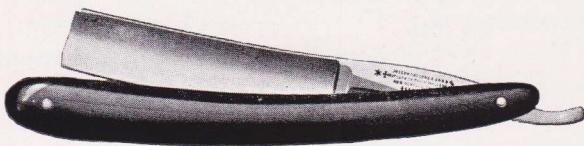


No. P968
Beechwood Handle, Brass Ferrule, Forged Blade Set in Bull Head Mould with Piercing Spike.



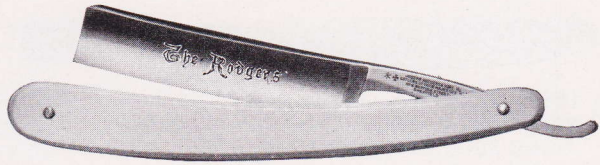
No. 29808
Beechwood Handle, Brass Ferrule, Forged Blade.
Rodgers Can Openers Are Built for Service

RAZORS



No. 3127
Hollow Ground, Full Polish Finish, Black Rubber Oval Handle.
5/8 inch S.P.—Square Point.
5/8 inch R.P.—Round Point.

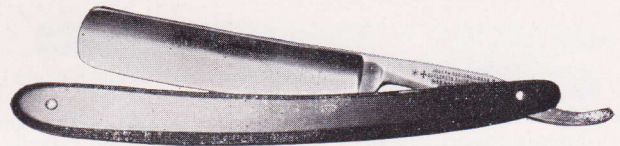
RAZORS



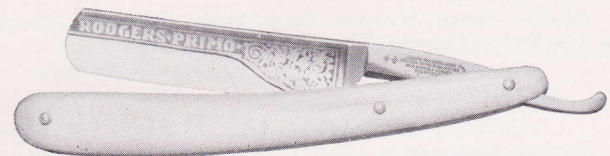
No. 3168
Hollow Ground, Full Polished Finish with Gilt Etching "The Rodgers," White Ivoride, Flat Handle.
5/8 inch S.P.—Square Point.



No. 3260
Full Hollow Ground, Full Polished Finish with Etching "The Hamburg Ring," Black Rubber Oval Handle.
4/8 inch S.P.—Square Point.
5/8 inch S.P.—Square Point.
5/8 inch R.P.—Round Point.



No. 14337
Full Hollow Ground, Full Polished Finish, Black Rubber Flat Handle.
5/8 inch S.P.—Square Point.



No. 14365
Full Hollow Ground, Polished and Gilt Finish, Etched "Rodgers-Primo," File Tang, White Ivoride Oval Handle, with Stop.
5/8 inch R.P.—Round Point.



No. 14388
Full Hollow Ground, Full Polished Finish with Etching "Imperial," File Tang, White Ivoride, Flat Handle with Stop. Handle Inlaid with Star and Cross.
5/8 inch R.P.—Round Point.

STEEL ERASERS AND OFFICE KNIVES



Knife Blade $2\frac{1}{4}$ inch — Handle $3\frac{3}{4}$ inch.

No. 18149 BR — Black Rubber Handle. No. 18149 Co — Cocobola Wood Handle.
No. 18149 WB — White Bone Handle.



Knife Blade $2\frac{1}{4}$ inch — Handle $3\frac{1}{2}$ inch.

No. 29776 WR — White Ivoride Handle.



Spear Head Blade $1\frac{1}{4}$ inch — Handle $3\frac{5}{8}$ inch.

No. 29657 Co — Cocobola Wood Handle.



Spear Head Blade $1\frac{1}{4}$ inch — Handle 4 inch.

No. 11688 WB — White Bone Handle. No. 11687 Co. — Cocobola Wood Handle.



Spear Head Blade $1\frac{1}{2}$ inch — Handle 5 inch.

No. 11697 Co. — Cocobola Wood Handle. No. 11698 WB — White Bone Handle.



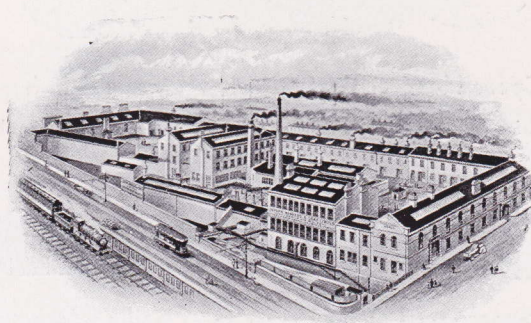
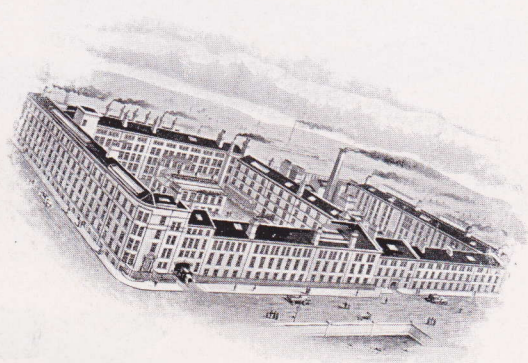
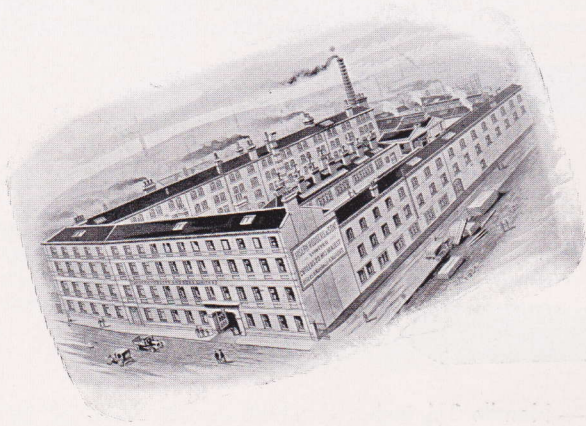
No. 24740 IVD.— $3\frac{1}{4}$
inches, brass lined, full polished blades, white celluloid
handle.



No. 24740 IVD.
 $3\frac{1}{2}$ inches, brass lined, full polished blades, white cellu-
loid handle.

The Works of

JOSEPH *Rodgers* & SONS, LIMITED



No. 6 WORKS, POND HILL

SHEAF ISLAND

RIVER LANE

SHEFFIELD, ENGLAND

DEALERS' PRICE LIST

* ✠ STAR AND CROSS CUTLERY ✠ *

JOSEPH RODGERS & SONS, LTD., No. 6 WORKS, POND HILL, SHEFFIELD, ENGLAND

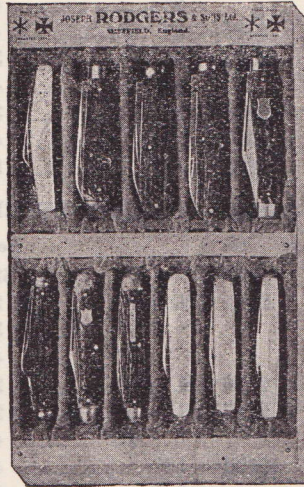
Alfred Field & Co., Inc., 93 Chambers Street, New York City

Sole Agents for U. S. A.

ADVERTISING MATTER

All Dealers stocking Rodgers "Star and Cross" Cutlery will, upon request, be supplied with an appropriate assortment of window and show case display material.

Illustrated below is a compact and most attractive show case display and stock box with compartments for displaying Rodgers Pen and Pocket Knives, furnished to Dealers gratis, upon request.



DIMENSIONS

Width 7 inches
 Length 11 inches
 Height 4 inches

CAPACITY

11 Patterns

Eleven (11) Compartment
 Tray lined with rich red
 velvet cross bars for price
 marking stock compart-
 ment below Tray.

STAINLESS STEEL PEN and POCKET KNIVES		
Cat. Page	No.	Per Doz.
R-1	9518	\$59.00
	24450 St. SS	54.00
	24450 P. SS	70.50
	24784 St. SS	73.00
	24784 P. SS	92.50
	24787 St. SS	51.50
	24787 P. SS	70.50
	62406 St.	37.00
	62406 P	61.00
	62408	35.00
	62416	66.00

PEN and POCKET KNIVES When Cutting or Nail Blade is Optional Price is the Same		
Cat. Page	No.	Per Doz.
R-3	P 950 St.	\$44.50
R-6	P 960 St.	66.00
R-3	6751 N/S	34.50
R-3	9621 N/S	47.00
R-3	9622 N/S	47.00
R-1	11579 St.	15.00
R-6	11966 St.	56.50
R-6	11966 St. 3 3/4"	58.50
R-3	12091 St.	43.50
R-7	12552 B/L St.	56.50
R-7	12552 B/L 3 1/2" Tob. St.	61.00
R-7	12552 B/L 3 3/4" Tob. St.	63.50
R-5	12552 — 3 Blade	51.50
R-7	12553 P	73.00

Cat. Page	No.	Per Doz.
R-4	12820 Horn	26.50
R-4	12862 St.	26.50
R-4	12864 St.	26.50
R-1	12935 Clip St.	61.00
R-6	16072 St.	49.00
R-6	16072 P	82.50
R-1	19923 St. — 1 Blade	27.00
R-4	19923 St. — 2 Blade	44.00
R-7	21701 St.	56.50
R-5	21750 St.	95.00
R-5	21750 P	178.00
R-2	21797 St.	26.00
R-2	21797 Ivd.	26.00
R-2	21798 P	61.00
R-5	21860 St.	47.00
R-5	21860 P	75.50
R-5	21868 St.	51.50
R-3	22418 St.	36.00
R-3	22418 St. 3 1/4"	37.50
R-3	22418 St. 3 1/2"	38.50
R-3	22418 P	52.50
R-3	22418 P 3 1/4"	57.50
R-5	22437 St.	56.50
R-7	22455 St.	56.50
R-7	22974 St.	61.00
R-7	24413 PNS	70.50
R-2	24450 St.	38.00
R-2	24450 St. 3 1/2"	42.00
R-2	24451 St.	38.00
R-5	24455 St.	51.50
R-5	24456 St.	51.50

Cat. Page	No.	Per Doz.
R-5	24457 P	68.50
R-4	24479 Spr. St.	27.50
R-4	24479 S.F. St.	27.50
R-7	24489 — 3 3/4" Tob. B/L	64.50
R-7	24514 St.	133.00
R-7	24651 PNS	87.50
R-7	24652 Tob. St.	104.00
R-7	24691 B/L St.	62.00
R-6	24692 St.	73.00
R-6	24692 St. 3 1/2"	70.50
R-6	24692 St. 3"	63.50
R-2	24726 St.	24.50
R-2	24726 P	49.00
R-4	24740 Ivd. 3 1/4"	42.00
R-4	24740 Ivd.	46.00
R-2	24744 St.	38.00
R-5	24750 P	63.50
R-5	24753 St.	56.50
R-1	24755 St.	58.50
R-7	24776 St.	56.50
R-7	24776 P	75.50
R-7	24777 P	80.50
R-6	24780 P	121.00
R-5	24784 St.	51.50
R-5	24784 P	68.50
R-5	24785 P	73.00
R-2	24787 St.	38.00
R-2	24787 St. Nail & Skld.	41.00
R-2	24787 P	58.50
R-2	24788 St.	42.00
R-2	24788 P	63.50

PRICES SUBJECT TO CHANGE WITHOUT NOTICE

(over)

PEN and POCKET KNIVES

Cat. Page	No.	Per Doz.
R-3	24838 P	57.00
R-6	24840 P	70.50
R-3	24876 PNS	82.50
R-3	24880 N/S Skld.	37.50
R-3	24896 N/S	26.50
R-3	24900 P	92.50
R-7	24904 P	126.00
R-5	24909 P	114.00
R-7	24916 PNS	118.50
R-5	24920 PNS	107.00
R-3	24932 N/S	29.00
R-6	25103 St.	54.00
R-2	25126 St. Skld.	35.00
R-2	25126 P	42.00
R-2	25126 P Skld.	44.50
R-5	25151 St.	56.50
R-2	25153 St. — 3"	44.00
R-2	25153 St.	51.50
R-6	25155 St.	56.50
R-6	25160 St.	99.50
R-2	25166 St.	38.00
R-3	26283 St.	37.00
R-3	26286 St.	49.00
R-3	26286 St. — 3½	51.50
R-6	26292 St. NS	54.00
R-6	26292 St. NS — 3½"	56.50
R-1	29640 St.	37.00
R-4	29663 St.	50.00
R-4	29760 St.	46.00
R-4	29773 St.	52.00
R-4	32377 St.	47.00
R-4	66532 St.	51.50
R-6	66533 St.	61.00
R-4	66561 — 2 Bld. St.	44.00
R-6	66561 St. — 3 Bld.	49.00
R-4	66562 — 2 Bld. St.	47.00
R-6	66562 St. — 3 Bld.	51.00

STAINLESS STEEL CARVERS

Cat. Page	No.	Per Doz.
R-8	94 — 6" 2 Pc.	Pair \$12.00
	94 — 9" 3 Pc.	Set 18.00
	94 KK 3 Pc.	Set 20.00
	1675 — 6" 2 Pc.	Pair 10.00
	1675 — 9" 3 Pc.	Set 16.00
	1675 KK 3 Pc.	Set 18.00
	1676 — 6" 2 Pc.	Pair 12.50
	1676 — 9" 3 Pc.	Set 20.00
	1830 — 6" 2 Pc.	Pair 7.00
	1830 — 8" 2 Pc.	Pair 8.50
	1830 — 8" 3 Pc.	Set 10.60
	1830 KK 3 Pc.	Set 11.60
	1832 — 6" 2 Pc.	Pair 7.00
	1832 — 8" 2 Pc.	Pair 8.50
	1832 — 8" 3 Pc.	Set 10.60
	1832 KK 3 Pc.	Set 11.60
	1833 — 6" 2 Pc.	Pair 7.00
	1833 — 8" 2 Pc.	Pair 8.50
	1833 — 8" 3 Pc.	Set 10.60
	1833 KK 3 Pc.	Set 11.60
	1834 — 6" 2 Pc.	Pair 7.00
	1834 — 8" 2 Pc.	Pair 8.50
	1834 — 8" 3 Pc.	Set 10.60
	1834 KK 3 Pc.	Set 11.60
	1835 — 6" 2 Pc.	Pair 9.00
	1835 — 8" 2 Pc.	Pair 11.00
	1835 — 8" 3 Pc.	Set 13.00
	1835 KK 3 Pc.	Set 14.00
	3666 — 6" 2 Pc.	Pair 10.00
	3666 — 9" 3 Pc.	Set 16.00
	3666 KK 3 Pc.	Set 18.00

CARBON STEEL CARVER

Cat. Page	No.	Per Doz.
R-8	1850 — 8" 3 Pc.	Set \$9.75

KITCHEN FORK — STAINLESS STEEL

Cat. Page	No.	Per Doz.
R-9	1892	\$25.00

SLICERS — STAINLESS STEEL

Cat. Page	No.	Per Doz.
R-9	1888 — 9"	\$34.00
	1890 — 8"	31.50
	2193 — 3"	22.00
	6"	33.00
	8"	47.50
	2196 — 8"	41.00
	2198 — 6½"	33.00
	8½"	44.50
	2200 — 9"	36.50
	2201 — 9"	46.50
	2202 — 10"	50.00

SLICERS — CARBON STEEL

Cat. Page	No.	Per Doz.
R-9	1888 C.S. — 9"	\$27.50
	2191 C.S. — 5"	26.00
	7"	34.00
	9"	43.00
	2196 C.S. — 8"	23.00
	2197 C.S. — 9"	26.50
	12"	43.50
	2199 — 12"	47.50
	14"	62.00
	16"	73.50
	2205 — 10"	34.00
	2210 C.S. — 10"	34.00
	2211 C.S. — 10"	34.00

BUTCHER KNIVES — STAINLESS STEEL

Cat. Page	No.	Per Doz.
R-10	1889 — 7"	\$35.00

BUTCHER KNIVES — CARBON STEEL

Cat. Page	No.	Per Doz.
R-10	2204 C.S. — 8"	\$24.00
	2212 C.S. — 12"	46.50
	14"	61.00

COOKS KNIVES — STAINLESS STEEL

Cat. Page	No.	Per Doz.
R-10	1891 — 8"	\$42.00
	2192 — 7"	45.50

COOKS KNIVES — CARBON STEEL

Cat. Page	No.	Per Doz.
R-10	85541 C.S. — 9"	\$44.50
	10"	49.00
	11"	56.00
	12"	63.00
	85541 EX H — 9"	45.50
	10"	50.00
	11"	57.00
	12"	64.50

PARING KNIVES — STAINLESS STEEL

Cat. Page	No.	Per Doz.
R-10	1885 — 3½"	\$15.50
	1886 — 3½"	15.50
	1894 — 4"	21.50
	2185 — 3½"	16.00
	2186 — 2½"	16.00
	2187 — 3"	16.00
	2188 — 3"	16.00
	2189 — 2¾"	12.00
	2190 — 3½"	14.50
	4404 — 3½"	20.00

GRAPE FRUIT KNIFE STAINLESS STEEL

Cat. Page	No.	Per Doz.
R-10	1887	\$21.50

TABLE KNIVES and FORKS

Cat. Page	No.	Per Set
R-11	170 Pearl Table	\$55.00
	170 Pearl Dess.	53.00
	821 Ivd. Table	15.00
	821 Ivd. Dess.	14.00

TABLE KNIVES ONLY

Cat. Page	No.	Per Doz.
R-11	170 Pearl Table	\$55.00
	821 Ivd. Table	13.50
	821 Ivd. Dess.	12.50

CHEESE SERVERS

Cat. Page	No.	Per Doz.
R-11	165 Scoop	\$35.50
	904 Knife	16.00

CAN OPENERS

Cat. Page	No.	Per Doz.
R-11	P 968	\$9.00
	29808	11.00

RAZORS

Cat. Page	No.	Per Doz.
R-11	3127 — ⅝ S.P.	\$42.50
	⅝ R.P.	42.50
	3168 — ⅝ S.P.	64.00
	3260 — 4/8 S.P.	45.50
	⅝ S.P.	47.50
	⅝ R.P.	47.50
	14337 — ⅝ S.P.	49.50
	14365 — ⅝ R.P.	65.00
	14388 — ⅝ R.P.	60.50

STEEL ERASERS

Cat. Page	No.	Per Doz.
12	11687 Co	\$20.00
	11688 WB	23.00
	11697 Co	21.00
	11698 WB	24.00
	18149 BR	24.00
	18149 CO	24.00
	18149 WB	24.00
	29657 Co	19.50
	29776 WR	25.00

OFFICE KNIVES

Cat. Page	No.	Per Doz.
R-12	24740 Ivd. 3¼"	\$42.00
	24740 Ivd.	46.00